

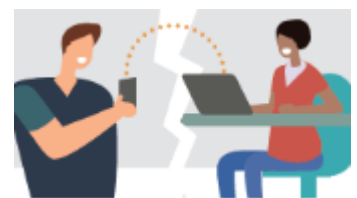
BEST PRACTICES FOR DELIVERING CONCRETE DURING COVID-19

The construction industry is the foundation of a strong and prosperous BC economy and concrete, as the most used construction material in the world, remains the cornerstone building material of the BC construction industry.

With the continuing spreading of COVID-19, around the world, it is critical that the construction industry implement new safety measures on BC's construction sites to ensure the long-term economical success of our province and country.

Concrete BC is asking all members of the construction team to consider the following safety issues regarding the use of ready mixed concrete on your projects:

- **Social Distancing** – One of the key government recommendations for limiting the spread of this virus remains maintaining a safe working distance between employees of 2 metres. What this means for the ready mixed industry is the following:
 - Ready mix drivers will remain in their truck until they are required to discharge the concrete.
 - While discharging the concrete, other site workers are to remain a safe **physical** distance from the drivers.
 - The only person to touch the controls, add or remove chutes or to use the water system of the ready-mix truck is the driver.
 - Pump operators, swampers, third-party testing companies or other project site personnel, are not to come in direct contact with the concrete truck.
- **Communicating Confirmed COVID-19 Test Results of Jobsite Workers** – One of the major challenges for all employers is ensuring worker safety. In order for the concrete producer to be able to ensure the safety of their workers, it is critical that our customers communicate information as soon as they are aware regarding any confirmed cases their staff may have, and if the impacted site worker may have interacted with our drivers, QC personnel or any other concrete producer employees.
- **Ordering Concrete** – Scheduling for efficient concrete delivery has always been a challenging task. To minimize ready-mix truck driver's exposure and overall wait-time onsite, we encourage contractors to communicate with the order desk and/or dispatch 48 hours prior to the placement for more efficient concrete delivery as well as communicating any order changes before, and during concrete placement that may impact pour rates and truck spacing.



- **Electronic Ticketing** – Significant progress has been made in the move towards electronic ticketing for concrete delivery. Given the potential for increased transmission from the handling of paper tickets, the industry will be requesting the support of Contractors, Consultants and Owners in the rapid expansion of electronic communications and avoiding the use of hard copy tickets when possible. Where electronic ticketing isn't available, utilizing a secure and weatherproof storage container for the collection of jobsite records should be considered, along with a system that minimizes employee contact with the records. Some owners have also accepted bulk emailing of delivery tickets for the project at the end of the day or moved to the taking pictures of delivery tickets with smartphones, to avoid paper tickets being handled by construction workers.
- **Site Meetings** – Our industry will continue to participate in these critical events, but the organizers must ensure that the minimum social separation distances are maintained for all participants and that the appropriate safety protocols are utilized. The industry preference remains conference calls and video meeting services wherever possible.
- **Implementation of Effective Concrete Field Testing** – The quality of concrete field testing activities remains the single largest concern of all Concrete BC members, and with the challenges of social distancing there needs to be a concerted effort by all construction team members to ensure that the concrete evaluation is conducted in an appropriate manner to avoid unnecessary project delays. Accurate field testing and the prompt distribution of all concrete test results to the full project team will be even more critical in the coming months.
- **On Site Technical Support** – While our members are still working very hard to provide technical support on site, the need for social distancing for these workers is critical. Please leave 2 metres of space around our member's technicians while they are performing their job tasks.
- **Spotters for Back-up Operations** – While we realize that there are many labour challenges on construction sites, ready mixed concrete trucks still require a signaller or flag-person in order to back into concrete delivery. These safety requirements are critical for every jobsite and cannot be overlooked.

During these very challenging times we encourage everyone to remember the **Golden Rule** and to treat others as you would like to be treated. If we are respectful of the challenges that everyone is facing, and we work together to implement new and innovative methods to address our shared safety concerns we can improve work processes while ensuring a safe work environment.

If you would like to provide feedback on this document or propose additional safety considerations and/or procedures related to ready mixed concrete operations, please contact the association directly.

Carolyn Campbell, Concrete BC, 250-859-3532, ccampbell@concretebc.ca

DISCLAIMER

Concrete BC (Concrete Association of BC), its staff, officers and directors make no representation or warranty, express or implied, as to the accuracy, completeness, or correctness of this information. Opinions, estimates, conclusions, or other information expressed or contained herein are subject to change without notice and are provided in good faith but without representation or warranty aforesaid. We assume no liability for damage or loss arising from the use of information contained herein. Concrete BC is not providing investment, legal, engineering or tax advice. We are not holding ourselves out to be or representing ourselves as persons who may practice law or provide legal services. Readers are urged to consult their own professional advisors for further confirmation and further information.